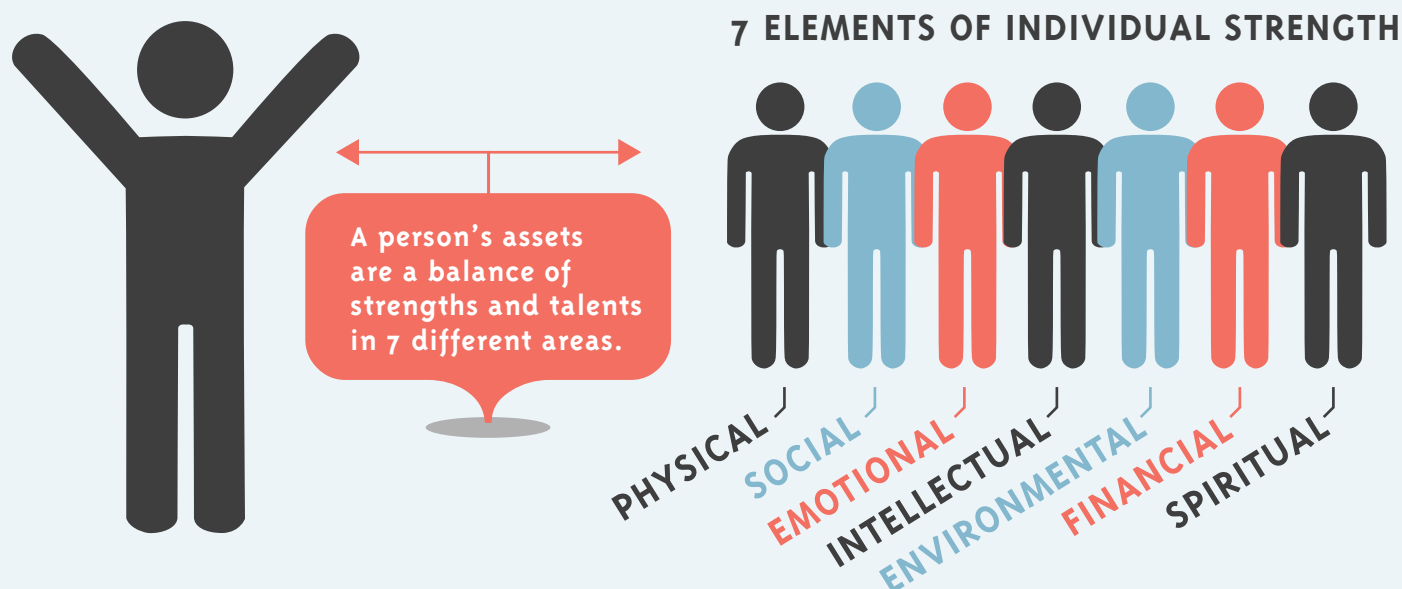


CREATING ADAPTIVE PROSPERITY FOR INDIANA COMMUNITIES

Comprehensive Community Development is collaboration by those exercising leadership toward a common vision for investing in resilient families and vibrant communities. This method focuses on building on strengths and potential of all parts of a community, from empowered individuals to entire sectors collaborating to accomplish shared goals with accountable strategies.

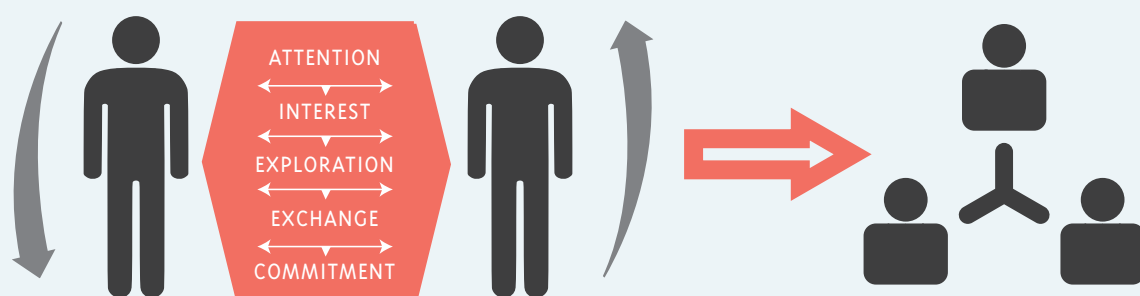
1

DEVELOPING INDIVIDUAL STRENGTHS, ASSETS, AND TALENTS



2

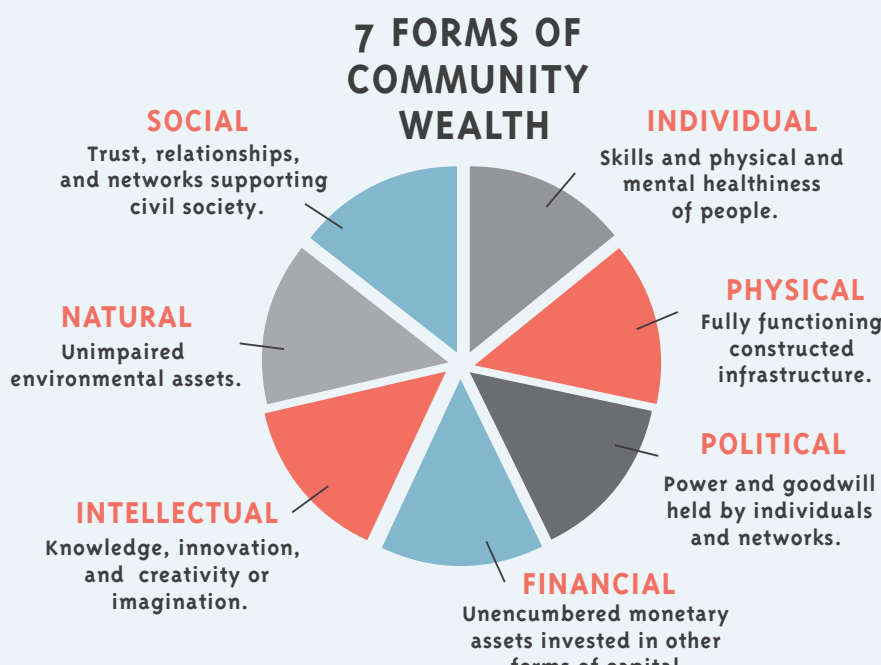
PEOPLE BUILD RELATIONSHIPS & NETWORKS



Relationships are a shared story where interests and assets meet, networks form, and people act on mutual commitments.

3

RELATIONSHIPS BUILD COMMUNITY WEALTH



4

LEADERSHIP MOBILIZES A COMMUNITY'S ASSETS TOWARD A SHARED VISION



5

SHARED VISION IS ACHIEVED BY MOBILIZING COMMUNITY ASSETS, EXCHANGING RESOURCES, INTENTIONALLY COLLABORATING, AND CONSTANTLY ADAPTING.



EVERY COMMUNITY IS DIFFERENT: ADAPTIVE PROSPERITY IS ONGOING AND NEVER LOOKS EXACTLY THE SAME.



Prosperity  
INDIANA  
Strengthening our communities.

ProsperityIndiana.org